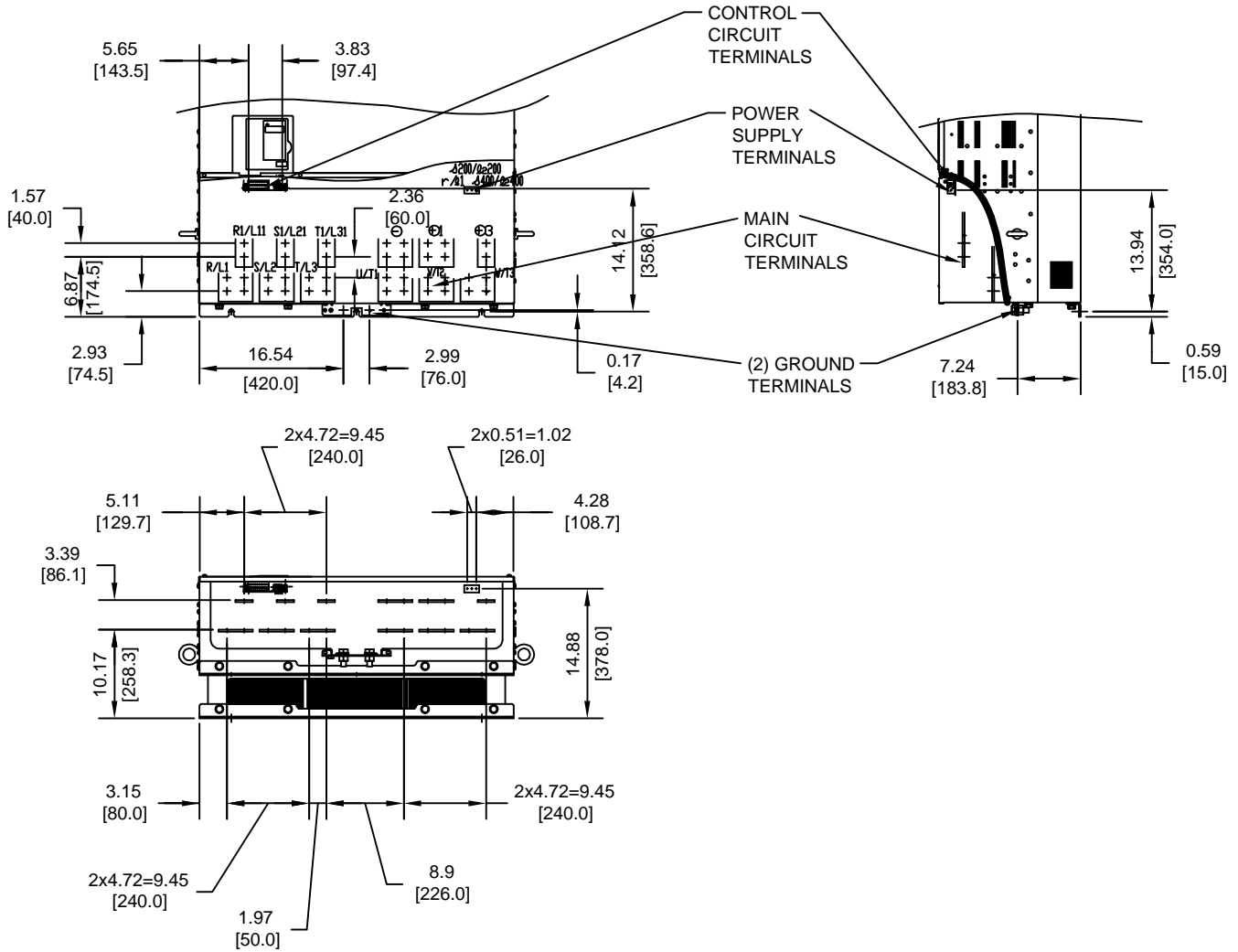


TERMINAL AND WIRING DETAILS (SCALE 1:20)




TERMINAL AND WIRE SPECIFICATIONS FOR
MAIN CIRCUIT AND GROUND

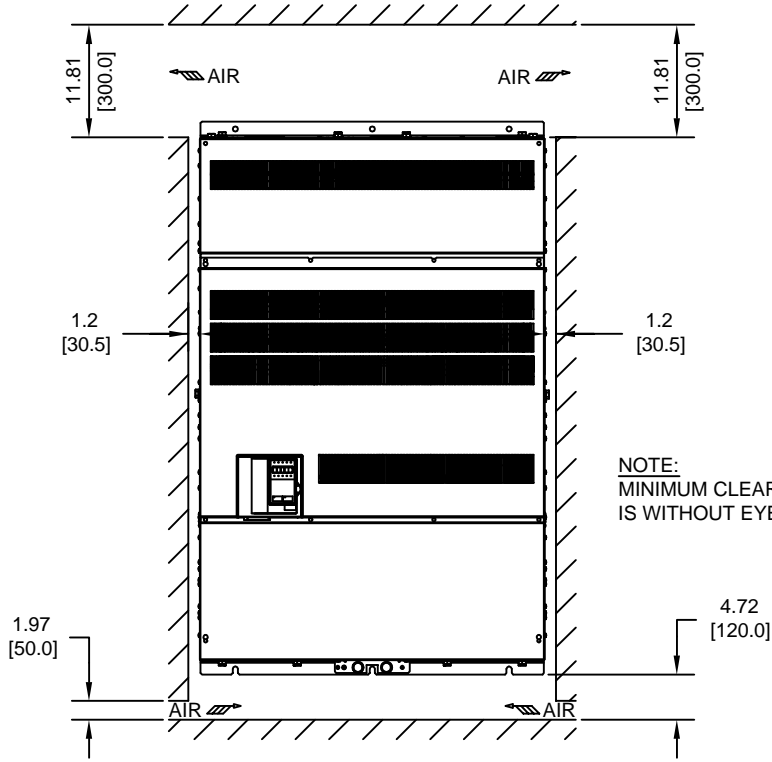
MODEL #	TERMINAL SYMBOL	TERMINAL SCREW	CLAMPING TORQUE lb.in.(N.m.)
4300	R/L1, S/L2, T/L3, U, V, W, U1, V1, W1, U2, V2, W2, R1/L11, S1/L21, T1/L31	M16	694 TO 867 (78.4 TO 98.0)
	r/l1, s200/l2200, s400/l2400	M4	11.4 TO 12.3 (1.3 TO 1.4)

NOTE: REFER TO APPLICABLE CODES FOR PROPER WIRE TYPE AND SIZE

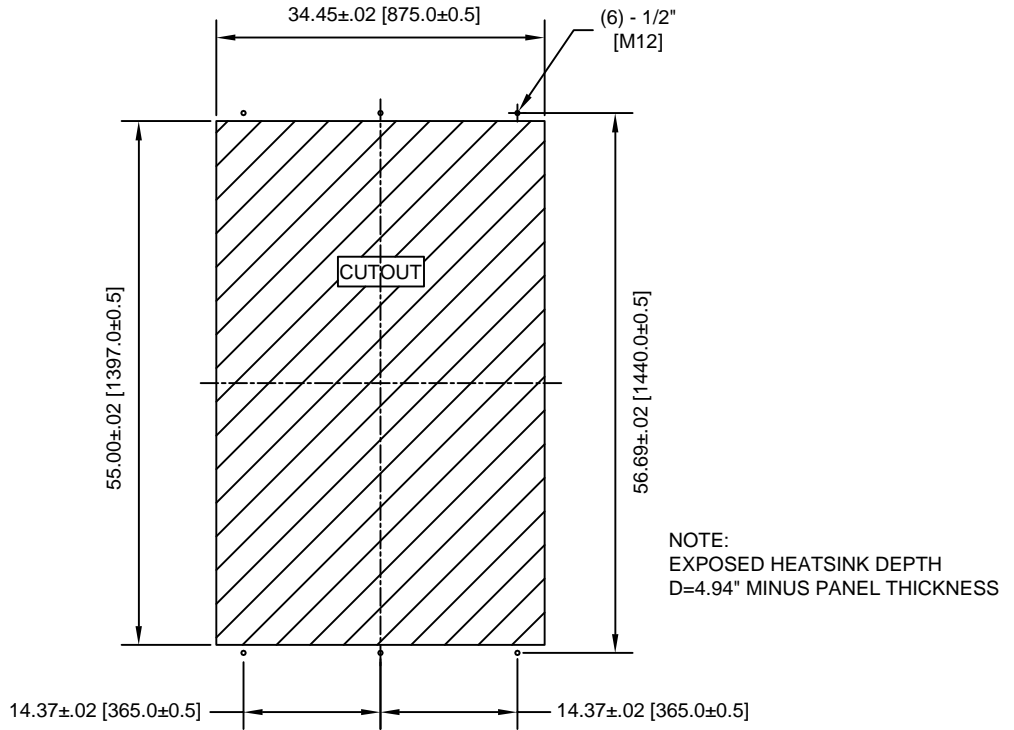
FOR ADDITIONAL DETAILS AND SPECIFICATIONS, CONSULT MANUAL

TOLERANCES/REFERENCES: - - - - - - - - - -	 YASKAWA <i>A World of Automation Solutions™</i> YASKAWA ELECTRIC AMERICA, INC. Corporate Headquarters 2121 Norman Drive South Waukegan, IL 60085 1-800-YASKAWA http://www.yaskawa.com	DRAWN: J. MATTAS	DATE 3-1-04	TITLE: G7 DIMENSION DRAWING		
		CHECKED: E. KU	DATE 4-4-04	FRAME SIZE 15		
		TECH: J. CAIRO	DATE 4-2-04	IP00 ENCLOSURE		
		APPROVED: T. SASADA	DATE 4-7-04	G7U4300		
UNITS: IN[mm]	SCALE: BY VIEW	ORIGINAL DESIGN: -	DATE -	SIZE A	REVISION -	PAGE 2 of 3
				DRAWING #: DD.G7.FR15.IP00.01		

MINIMUM INSTALLATION CLEARANCES (SCALE 1:20)



PANEL CUTOUT FOR EXTERNAL HEATSINK MOUNTING CONFIGURATION (SCALE 1:20)



FOR ADDITIONAL DETAILS AND SPECIFICATIONS, CONSULT MANUAL

TOLERANCES/REFERENCES: - - - - - - - - - -		<p>YASKAWA A World of Automation Solutions™</p> <p>YASKAWA ELECTRIC AMERICA, INC. Corporate Headquarters 2121 Norman Drive South Waukegan, IL 60085 1-800-YASKAWA http://www.yaskawa.com</p>	DRAWN: J. MATTAS	DATE 3-1-04	TITLE: G7 DIMENSION DRAWING		
UNITS: IN[mm]	SCALE: BY VIEW		CHECKED: E. KU	DATE 4-4-04	FRAME SIZE 15		
		TECH: J. CAIRO	DATE 4-2-04	IP00 ENCLOSURE			
		APPROVED: T. SASADA	DATE 4-7-04	SIZE A	REVISION -	PAGE 3 of 3	
		ORIGINAL DESIGN: -	DATE -	DRAWING #: DD.G7.FR15.IP00.01			